



Part #: M75-9IDFB-000x



### Why TrafficCalm?

- ❑ UL/ULC listed products available
- ❑ ISO:9001 Certified USA based manufacturing facility
- ❑ All signs 100% MUTCD compliant
- ❑ Vandal resistant designs
- ❑ Broadest range of sizes and options in the industry
- ❑ Industry leading turn-around from order to delivery
- ❑ Unlimited tech support and customer service from our USA facility
- ❑ Industry Pioneers in Radar Driver Feedback Technology

## TrafficCalm 9" Driver Feedback Smart Sign

The TrafficCalm Street Series of Radar Driver Feedback Smart Signs offers solutions for increasing driver speed awareness and road safety. The bright 9" characters can be seen from up to 450' away, and help increase driver speed awareness on the neighborhood streets where so many small accidents occur every year. SafetyCalm™ data collection software allows you to gather hard data of traffic patterns and program the sign to help keep streets safer.

TrafficCalm Driver Feedback Signs are manufactured in the USA in an ISO 9001:2008 certified facility, meeting and exceeding industry standards and state testing requirements. The 9" TrafficCalm Smart Signs are UL/ULC listed for electric code compliance. TrafficCalm signs are unmatched in durability, accuracy, ease of use and affordability.

### Features:

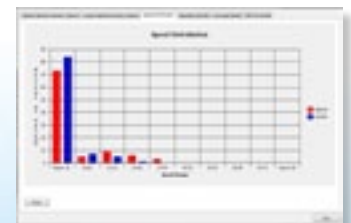
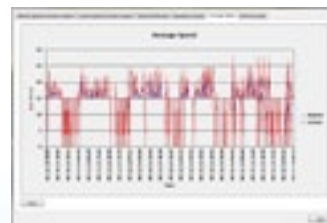
- Bluetooth remote programming
- SafetyCalm™ Configuration and Traffic Data Collection software included free
- Programmable full matrix display allows the sign to display speed numbers as well as messages like 'SLOW DOWN'.
- UL/ULC listed for simple and code compliant installation
- 100% MUTCD compliant
- Solar or 110V AC ready (power packages sold separately)
- K-band (24.15GHz) radar, range 450+ feet.
- Unlimited tech support and customer service from our USA facility for the life of the sign
- Fast delivery- typically ships within 5 days of order
- 3 year limited warranty

### Package Includes:

Driver Feedback sign, mounting bracket, SafetyCalm™ Configuration and Traffic Data Collection Software, installation and user manual.

### SafetyCalm™

SafetyCalm™ Configuration and Traffic Data Collection Software allows you to program your sign from your laptop and collect and graphically display traffic data



The 9" Smart Sign is also available as a Variable Speed Limit sign with data logging and driver feedback (speed awareness) features. When ordering, select VSL.

# 9" Driver Feedback Smart Sign

Feature	Specifications
<b>LED and Radar Components</b>	
Speed Display Height	9" high numbers
Text & Emoticon Height	3" high two lines 'SLOW DOWN' text; 9" high 'smile' or 'sad' face emoticon
"YOUR SPEED" Legend	3" high highway gothic font (MUTCD compliant)
LED, 1/2 Cone Angle	Amber (590nm); ½ Angle 15°; Rated 100,000 hours; 20,000 CDA/ M <sup>2</sup> , Auto Dimming employed
Amber LED on Axis Intensity	20,000 CDA/SQ meter
Sign Legibility	Viewable range: 750 feet; legible range: 450 feet
Speed Resolution and Range	Min 5 mph; Max 99 mph in 1 mph steps (min 8 kph, max 99 kph in 1.6 kph steps)
Radar Specification and Range	K-band (24.15GHz) direct sensing; license free (FCC part 15 compliant); average range at 450 feet (plus 400' or minus 100' depending on vehicle size)
<b>Materials and Construction</b>	
Chassis Size/Total Weight	18" width x 24" height x 1-7/8" depth; 10 pounds with bracket
Front Face Sheeting	3M™ Diamond Grade™; high visibility prismatic, long life protective sheeting
Sign Face Color	White; fluorescent yellow-green; additional colors optional
Sign Mounting Construction	1/8" thick aluminum brackets and face; standard 3% tilt bracket configuration; flat mount brackets optional
Vandal Resistant Construction	Sealed electronics box (ECS): 1/16" thick aluminum enclosure attached to a 1/8" thick mounting plate. The ECS is removable from the chassis as a complete unit.
	3/16" high impact polycarbonate face with high contrast mask; anti-glare graffiti and sunlight resistant
	Provisions for padlocking in place are provided
	Standard DOT powder coat green color with additional colors optional
Electronics Enclosure Rating	Weatherproof; NEMA 3R
<b>Electrical Specifications</b>	
Power Requirements	12VDC, low standby: average day at 8.5W, average night at 1.5W
Voltage Requirements	9V-30VDC, 12VDC Nominal (Battery protection at 11.5VDC and 10.8VDC; startup at 12.3VDC)
Power Options	AC power kit
	Solar kits: 55W, 90W and 130W
	Battery charger kit; battery box
Operating Temperature	Internal components: -34°C to +74°C/(-29°F to +165°F)
	Ambient environment: -34°C to +60°C/(-29°F to 140°F)
Warranties	3 year limited warranty; Power options: 2 year limited warranty (excluding batteries)
<b>SafetyCalm™ Configuration and Traffic Data Collection Software</b>	
Data Collection	SafetyCalm™ software; license free
Event Logging with Time Stamp	Event data: (60 days with a circular buffer): applied voltage (VDC); internal temperature (°C); ambient light (lux); display functional status; traffic status; shock sensor events; parameter events
Vehicle Data Logging Capacity	Speed Data: 90 days with circular buffer (oldest reading replaced by newest) based on 24/7 operation
Programmable Display Features	Min. speed limit; speed limit; over speed; maximum speed to display
	Display type: blank (stealth mode); actual speed; speed limit; flashing digits; steady digits; strobing digits and strobing 'SLOW DOWN' text
	Programmable integrated "SLOW DOWN" Message; external beacon control
Schedules	Repeating daily: 9 events; repeating weekly: 9 events; non-repeating dated: 9 events; (27 events in each 24 hour period; 365 days per year while powered)
Communications	Bluetooth™ Class 1 connectivity (V2.1 +EDC) min at 30' (FCC certified); RS232 port
	App for Android™ optional
System Requirements	Operating system: Windows XP; Windows Vista; Windows 7
	Screen resolution: 1024 x 768 or better
	Communications interfaces: Bluetooth Class 1 or 2 adapters (capabilities: V1.0, V1.2, V2.0, V2.1 + EDC)
	Disk space: 16.5MB minimum

3M™ and Diamond Grade™ are trademarks of 3M. Android is a trademark of Google, Inc. TrafficCalm product descriptions and specifications are subject to change without notice. All Rights Reserved