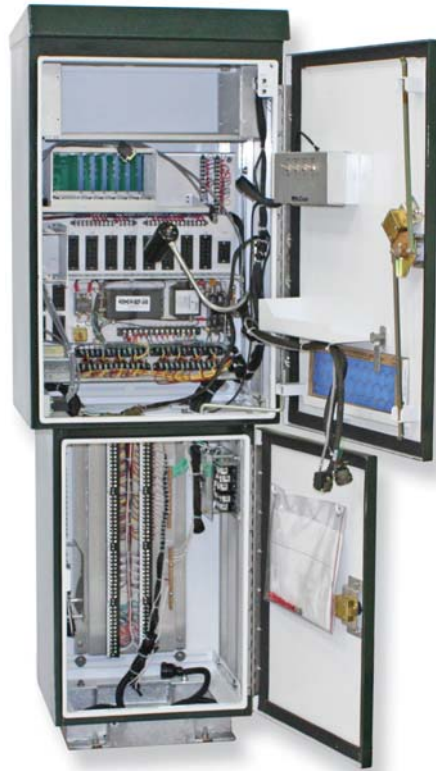


"G" NEMA Controller Cabinet

TS 2, Type 1



Cabinet shown powder coated
Forest Green outside and white inside

Cabinets

Controllers

Signals

Signs

Software

Specialty

Overview

McCain's "G" NEMA Controller Cabinet meets all the functional requirements of the National Electrical Manufacturers Association (NEMA) TS 2, v 02.06, cabinet specification, affording all the flexibility and advanced features of the NEMA TS 2 design. In addition, this cabinet, a Caltrans Type "G," supports the 2070L N2 controller requirements making it compatible with that controller as well. Built with two compartments, an upper cabinet and a lower pedestal cabinet, both with full size doors, the interior of this cabinet is easily accessible. In addition, Unistrut mounting channels on all interior walls of the cabinet make it a versatile choice to fit your requirements.

Benefits

- Compact size
- Upper and lower compartments
- Meets NEMA TS 2 Type 1 specification
- Compatible with NEMA TS 2 controller
- Compatible with 2070L N2 controller

Product Description

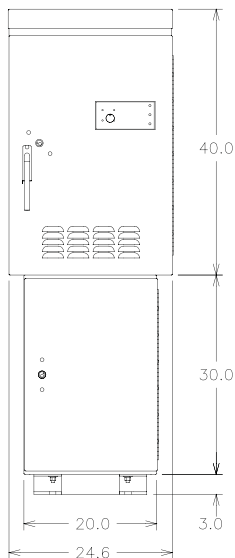
The McCain "G" NEMA Controller Cabinet's small size and support of both the 2070L N2 controller and the NEMA TS 2, Type 1 controller make it a compact and versatile cabinet. Complete with two compartments and a separate pedestal base, the full doors on the two compartments make setup and maintenance of this cabinet easy.

This cabinet is designed with an 8-position load bay that can be configured in any combination of traffic phases, pedestrian phases, or overlaps. Also included in this "G" cabinet are a 6-position detector rack (two-channel), as well as two Bus Interface Units (BIU), and a Malfunction Management Unit (MMU).

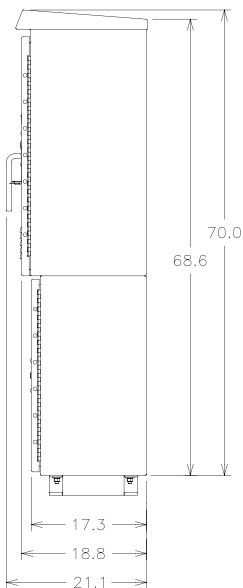
A police door and four-switch panel offer several types of operation overrides. A thermostatically controlled fan ventilates the cabinet while a filter behind the louvered upper door vents prevents dirt from permeating the cabinet's air supply.

"G"TS 2 Type 1 NEMA Controller Cabinet

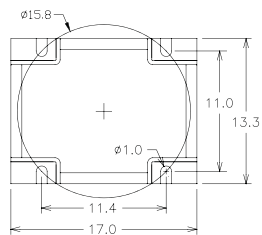
Front



Side



Base



Dimensions rounded to the nearest 0.1"
Base enlarged to approximately 2x scale
for clarity

Standard Features

- 8-position load bay configurable in any combination of traffic phases, pedestrian phases, or overlaps
- Police door with "Auto/Manual" and "Auto/Flash" switches and manual advance switch with 6' cord
- Switch panel with Auto/Flash, Signals On/Off, Stop Time, and Controller On/Off switches
- Cabinet light on flexible arm with manual on/off switch and door switch
- Main circuit breaker, 30A, 250V
- GFI convenience outlet, 20A, in upper cabinet
- Duplex receptacle, 15A, surge protected, in pedestal cabinet
- All terminals are barrier type
- Alarm door switch

Assemblies

- Detector Rack, 6-position, (4) 2-channel, (2) Opticom, with BIU (Bus Interface Unit)
- BIU (separate unit mounted on back panel)
- Load Bay, 8-position with flasher unit socket
- SDLC bus, 7-position
- MMU (Malfunction Management Unit), 16-channel
- Flash transfer relay sockets (4)
- Cabinet power supply, TS 2

General Specifications

- Dimensions: Upper Cabinet - 40" H x 24.6" W x 18.8" D
Pedestal Cabinet - 30" H x 20" W x 17.3" D
Pedestal Cabinet Base - 3" H x 17" W x 13.3" D
(Dimensions rounded to the nearest .1")
- Material: 5052-H32 aluminum, 0.125" thick (except Unistrut channels - 6063-T5 aluminum)
- Finishes: Natural, powder coat (standard, anti-graffiti, and custom colors), anodized
- Access: Upper Cabinet - Front door (1), full size
Pedestal Cabinet - Front door (1), full size
- Latching System: Upper Cabinet - 3-point with choice of Corbin or Best lock
Pedestal Cabinet - choice of Corbin or Best lock
- Handles: Standard - 3/4" round, stainless steel, with padlock feature (upper cabinet only)
- Door Stops: 90 deg and 180 deg (± 10 deg), bottom (upper cabinet only)
- Rack Assembly: Vertical Unistrut type channels (2) on each of 3 interior walls in upper and pedestal cabinets, horizontally adjustable.
- Ventilation: Thermostatically controlled 100 CFM fan
Louvered air intake in door, pleated filter
- Mounting: Base mounted
- Shipping Weight: 222 lbs without plug-ins or controller

To learn more about
McCain's Integrated Traffic
Solutions, please contact
info@mccain-inc.com or
call (760) 727-8100



2365 OAK RIDGE WAY // VISTA, CALIFORNIA 92081 // USA // WWW.MCCAIN-INC.COM

© 2010 McCain Inc. Updated 02/16/10. McCain reserves the right to change product specifications without notice.
For the most up-to-date information, please contact McCain.